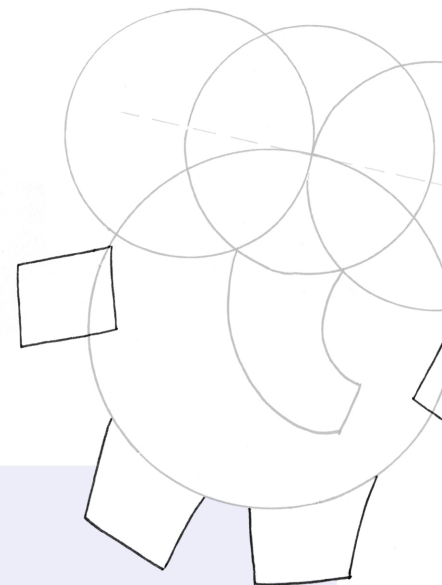
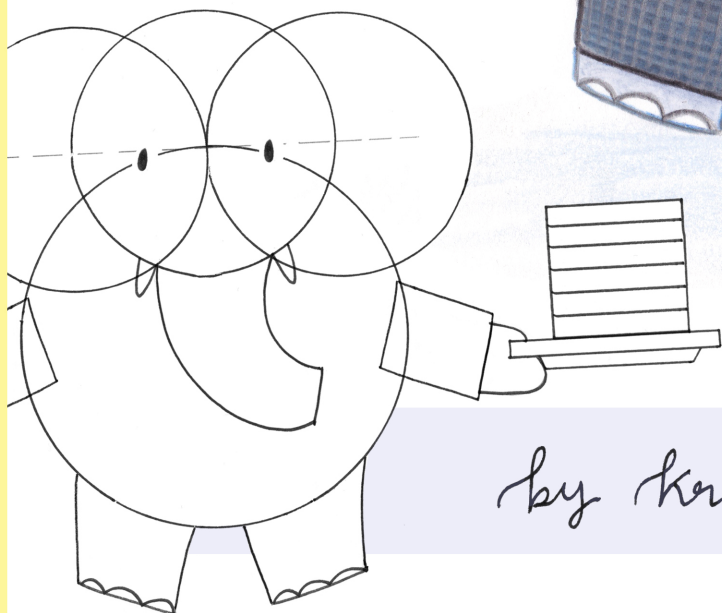
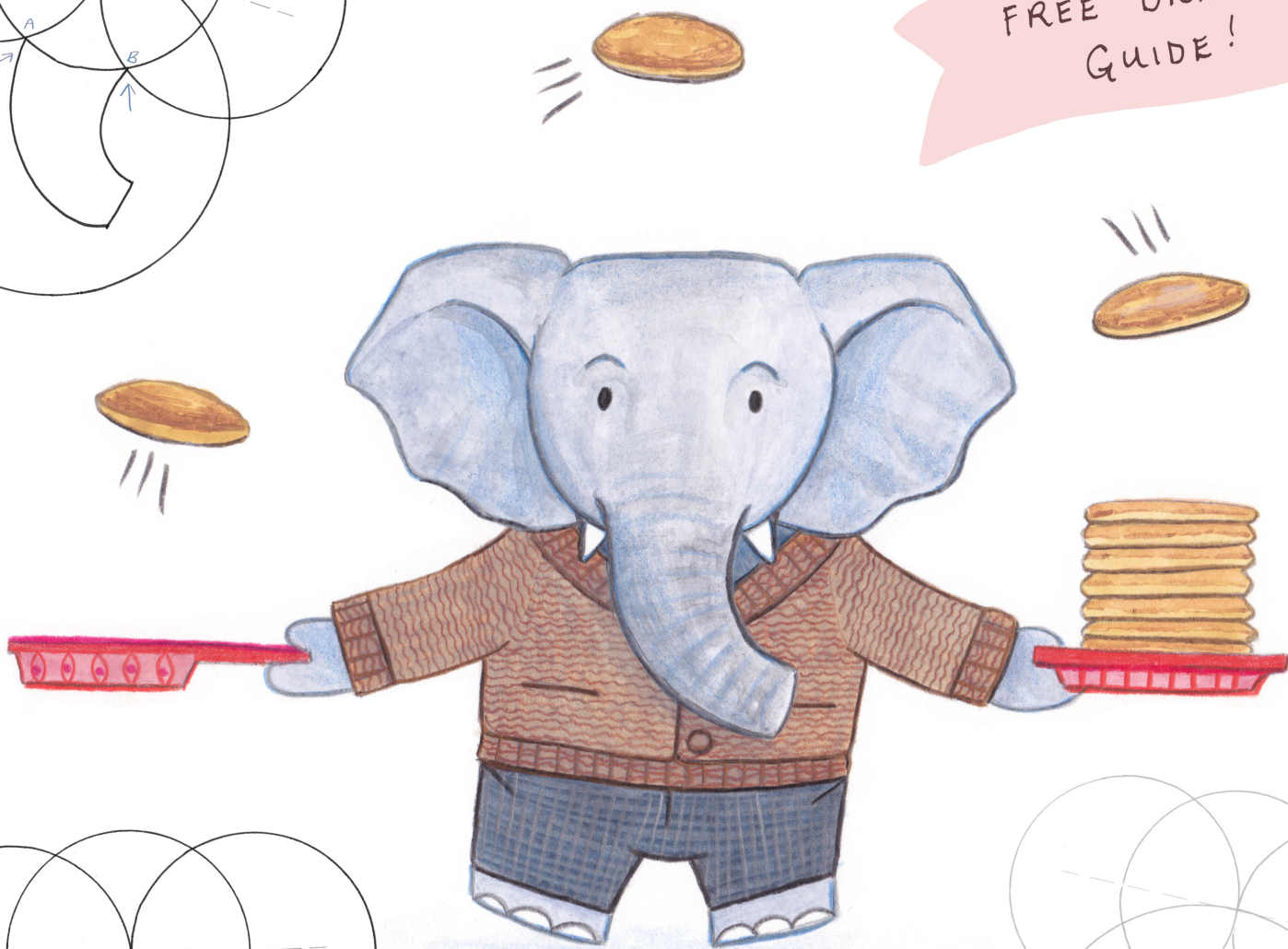
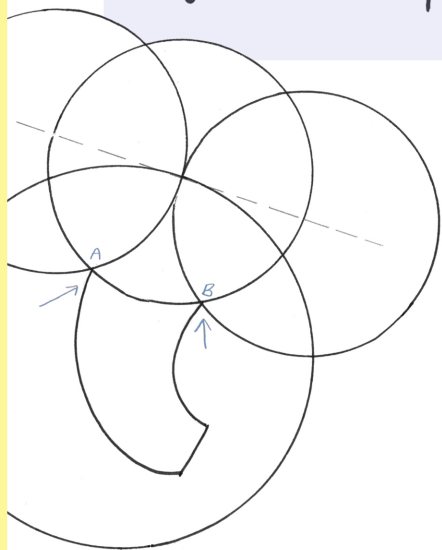


# HOW TO DRAW

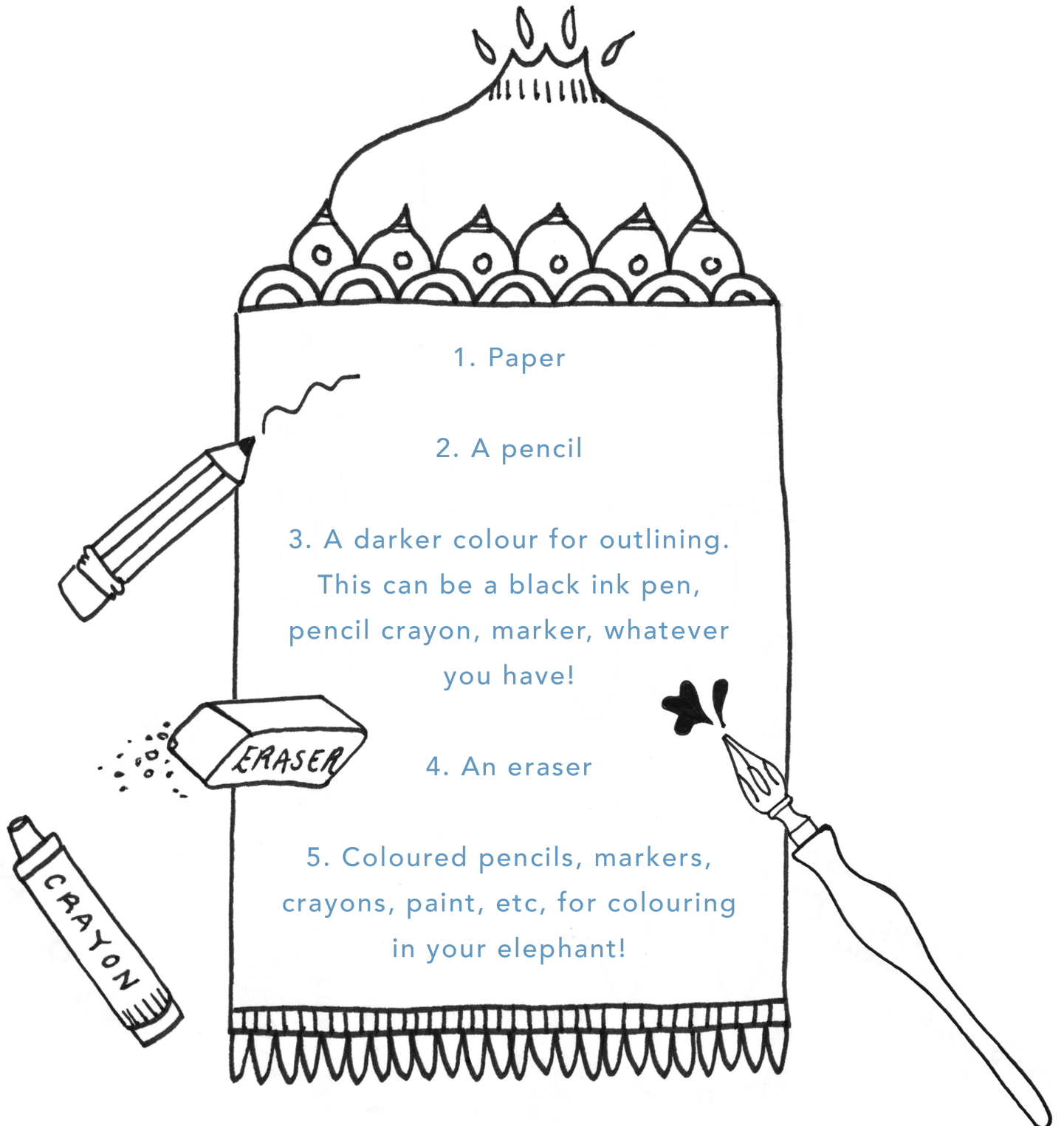
an Elephant Flipping Pancakes!

FREE DRAWING  
GUIDE!



by Kristen Taylor

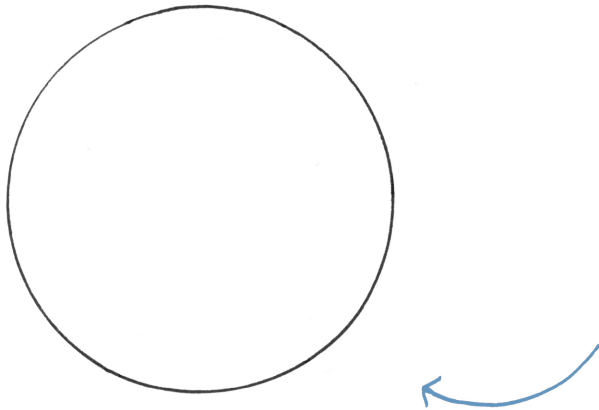
# materials



## Let's Begin!

Gather all your materials and get into a nice, comfortable position.

1.

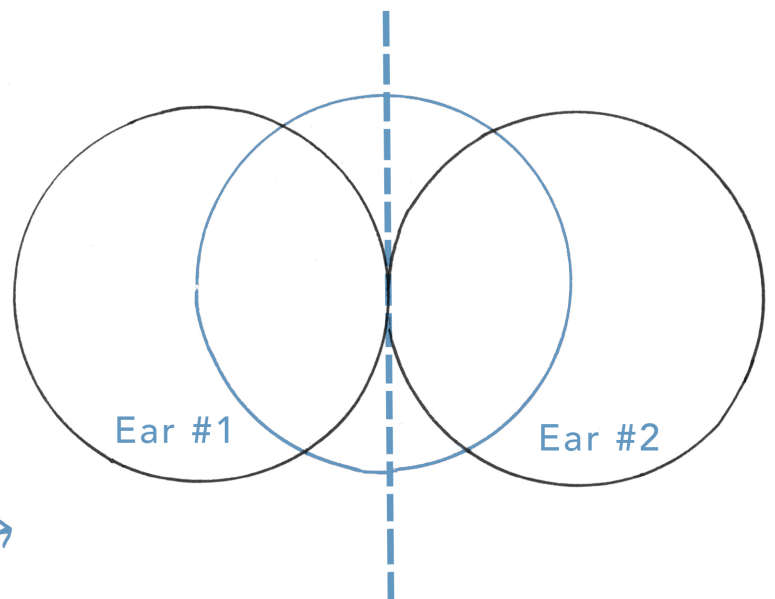


We are going to start off with the Elephant's face by drawing a simple circle. Use your pencil to sketch a round shape. You can do this free-hand, or use something in your home as a guide, such as a cup, a mason jar lid, a yogurt container, etc.

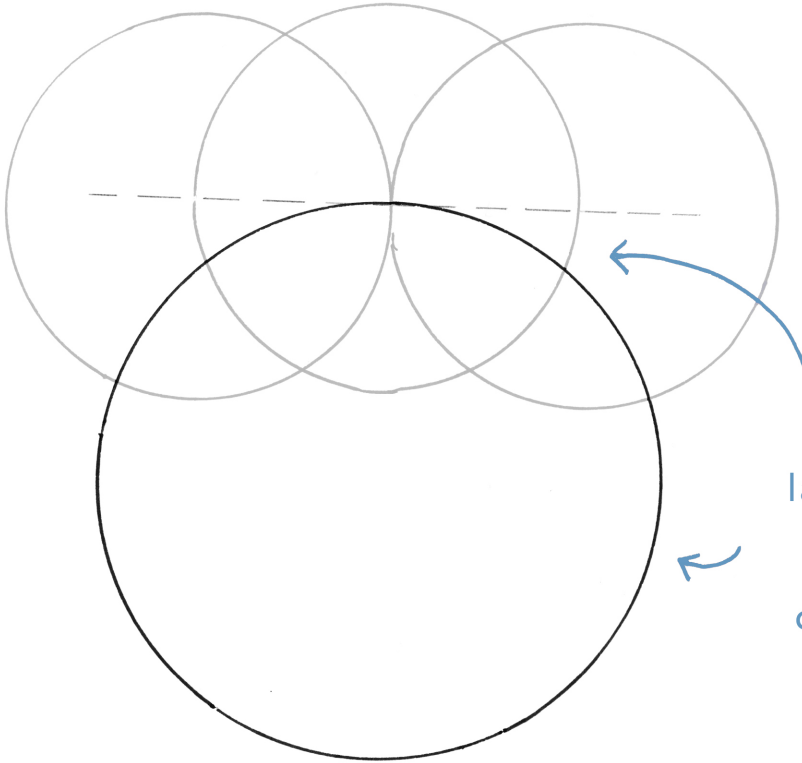
2.

Now we are going to draw what will soon be the Elephant's ears.

Find the centre of your circle and draw (or trace) two more circles, starting from this centre point.

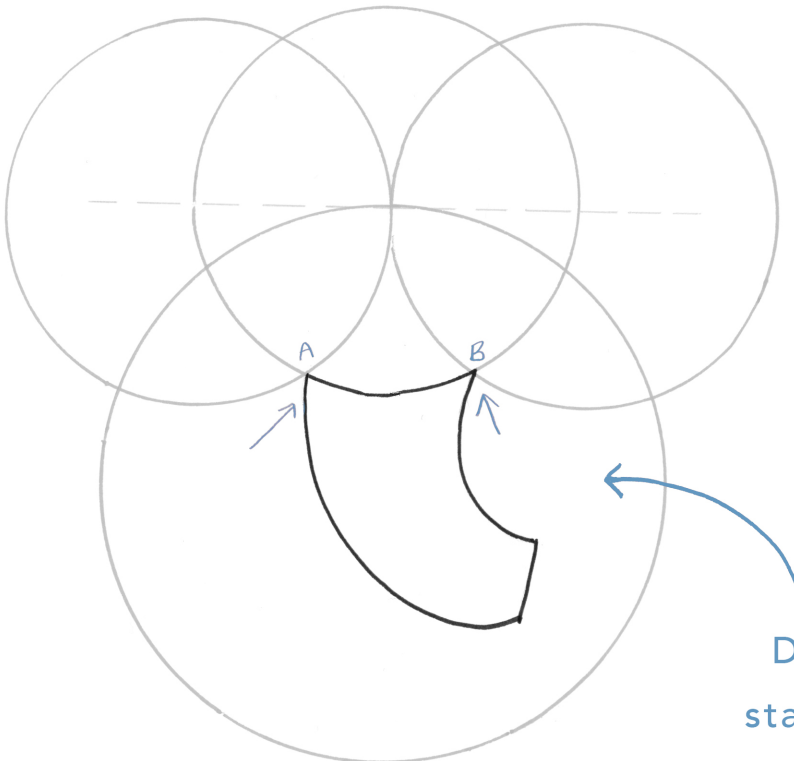


3.



Draw a fourth (slightly larger) circle down from the mid point of the centre head circle. This will form the body.

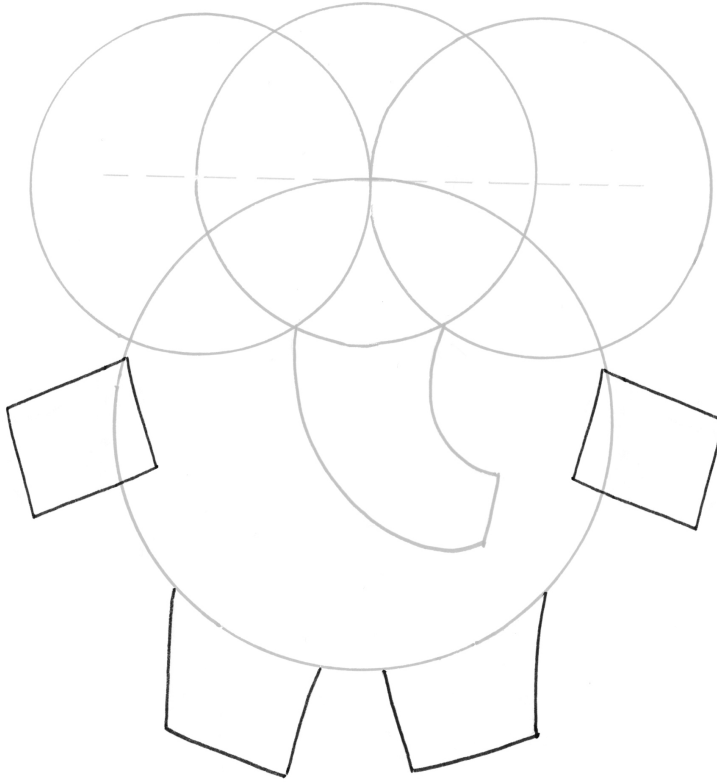
4.



Draw a trunk shape, starting at point A and ending at point B.



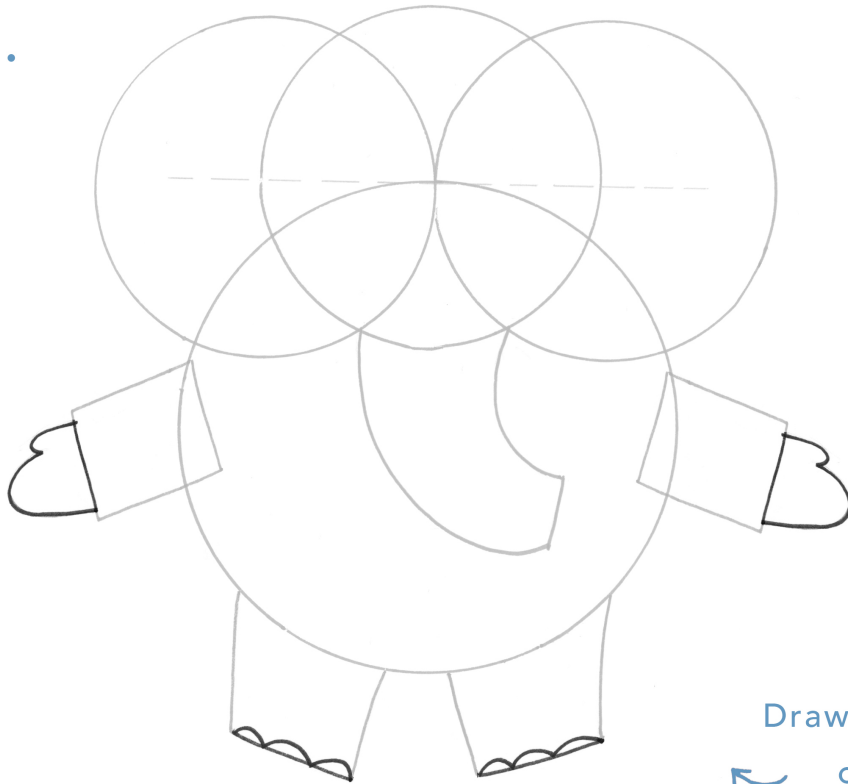
5.



Draw rectangular shapes where the arms and legs would be.



6.

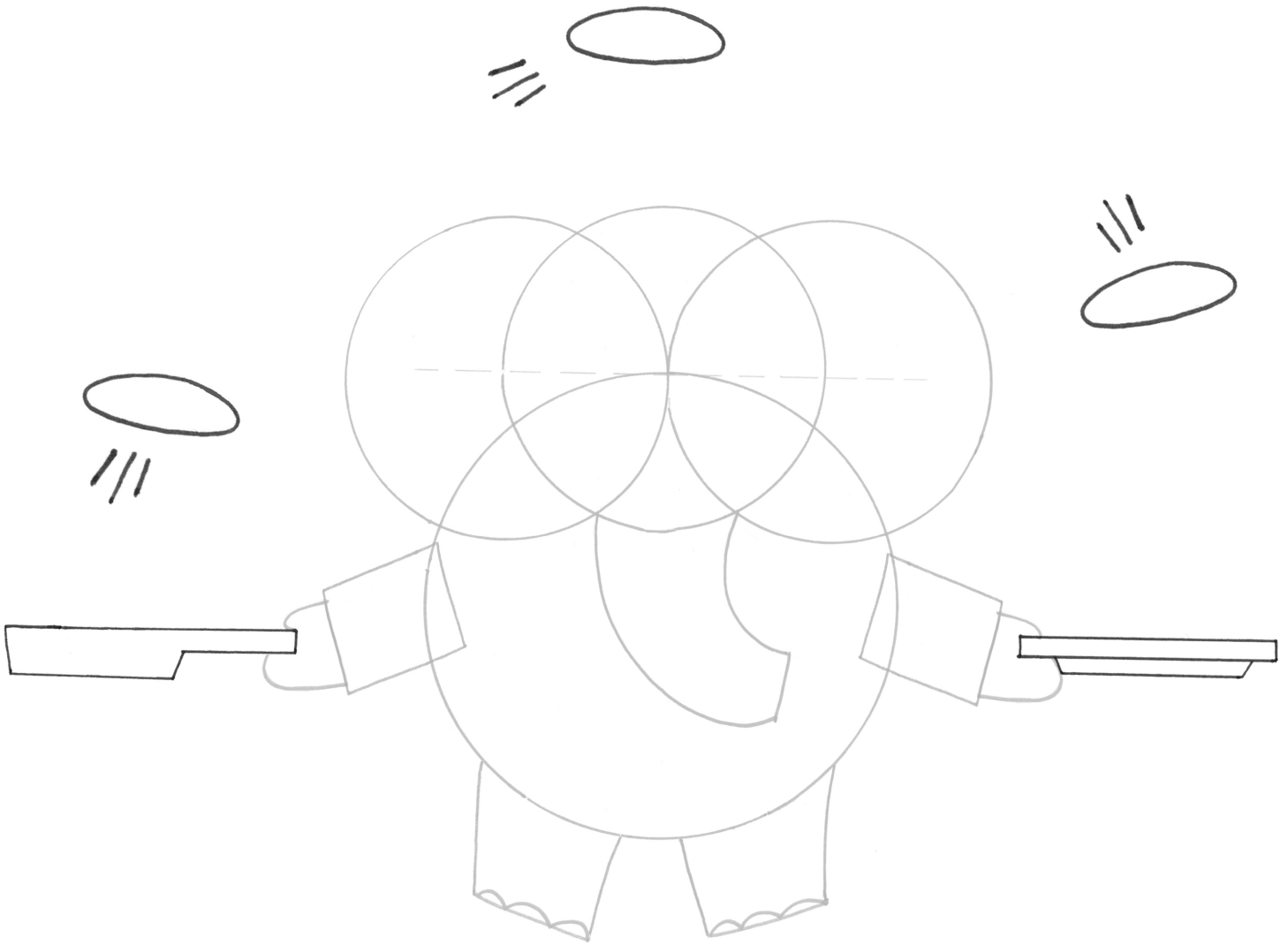


Draw two mitt-like hands on each arm.



Draw a set of toenails on each foot.



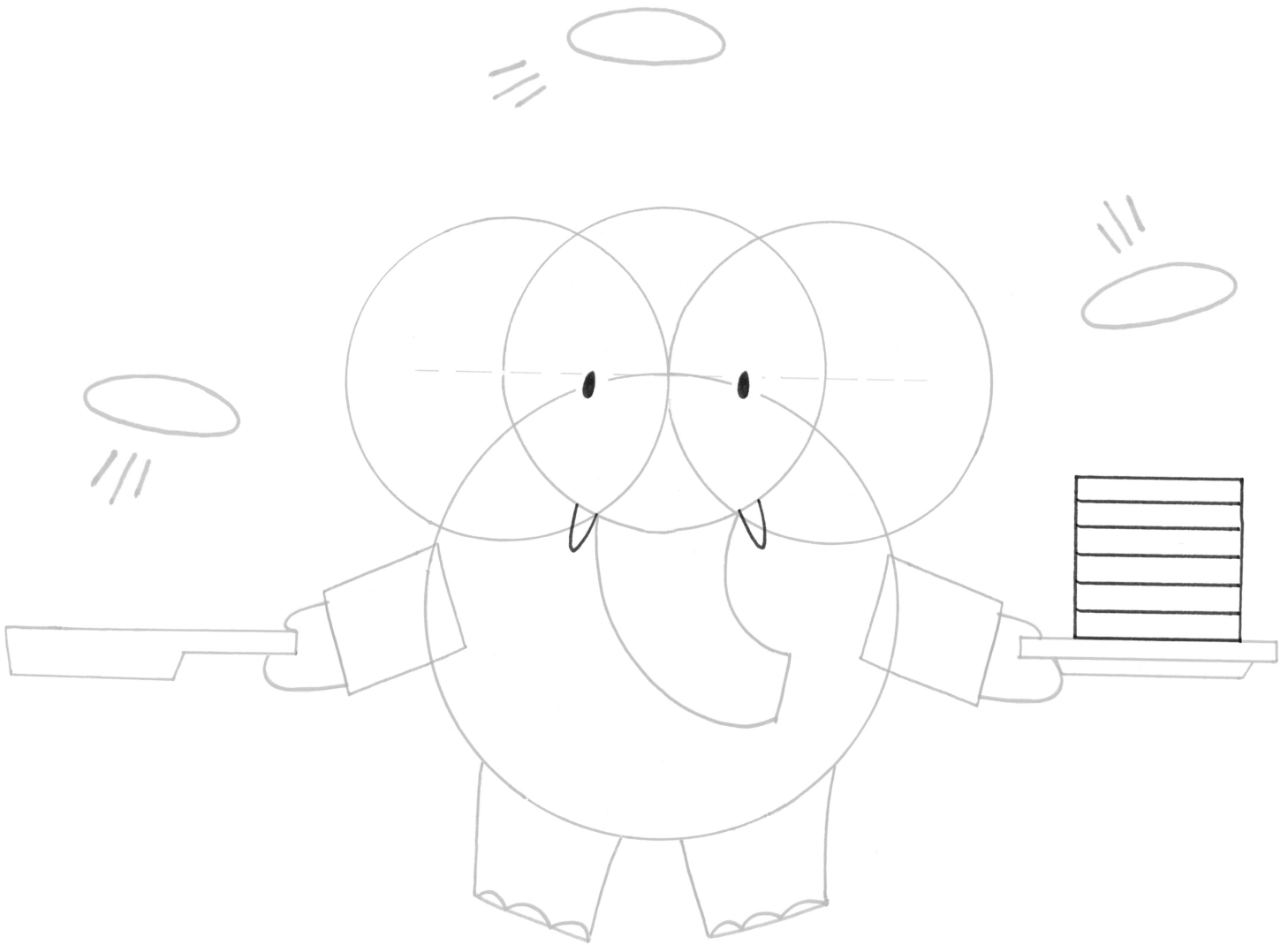


7. Draw a pan in one hand, and a plate in the other.

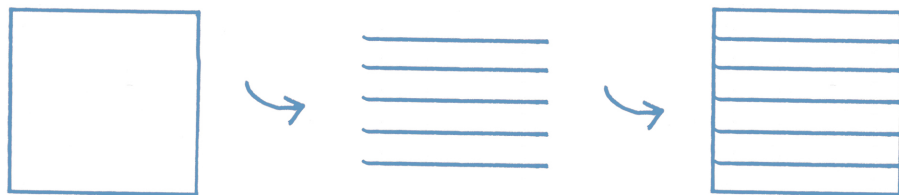


8. Add a few ovals arching over the figure. These will be the pancakes.  
*Tip - You can add a few quick lines underneath each to suggest movement.*



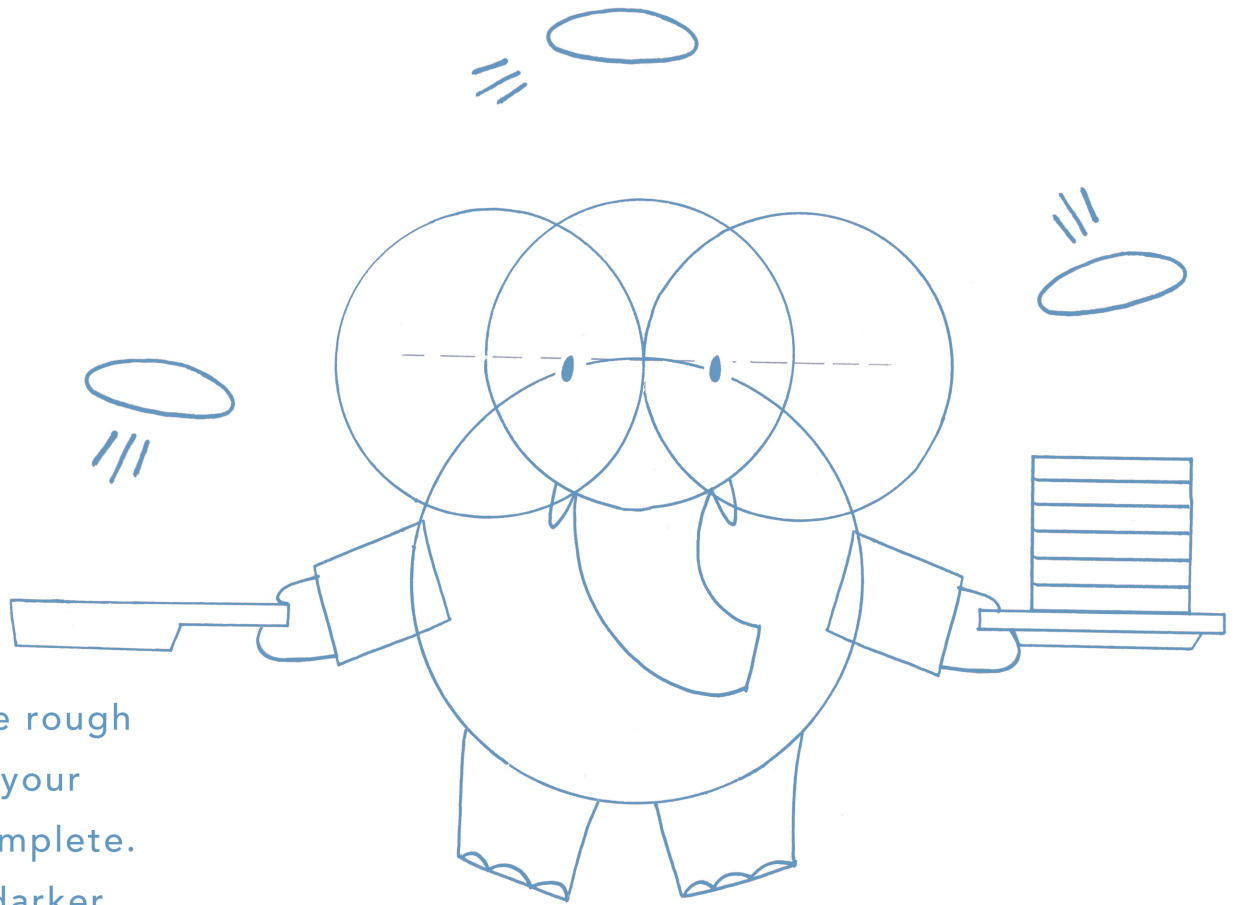


9. Draw a rectangle on top of the plate.  
Fill this rectangle with lines.  
You now have a stack of pancakes!



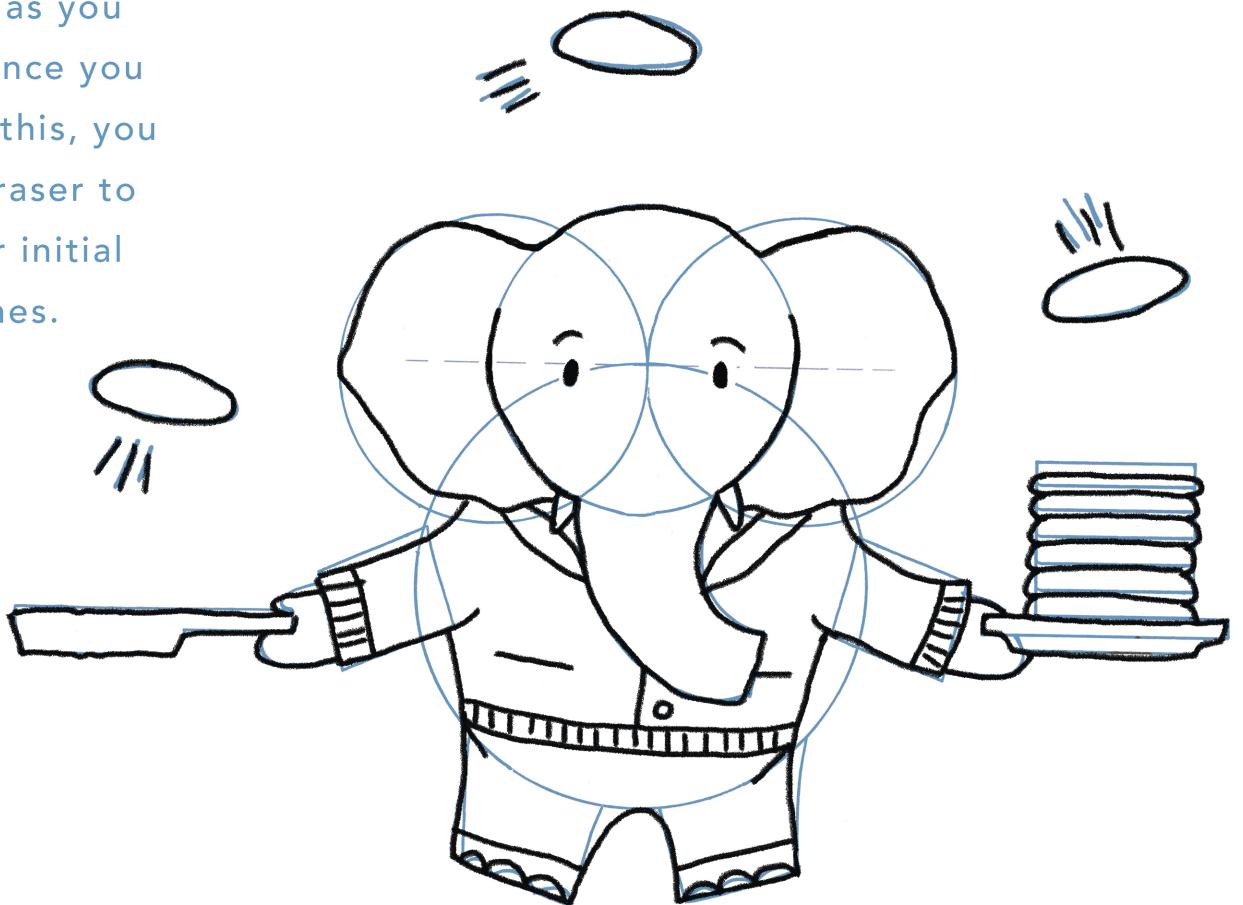
10. Now, find the middle of your elephant's face and sketch two dots. These will be its eyes! ● ●  
Draw two tusks where the trunk meets the face.

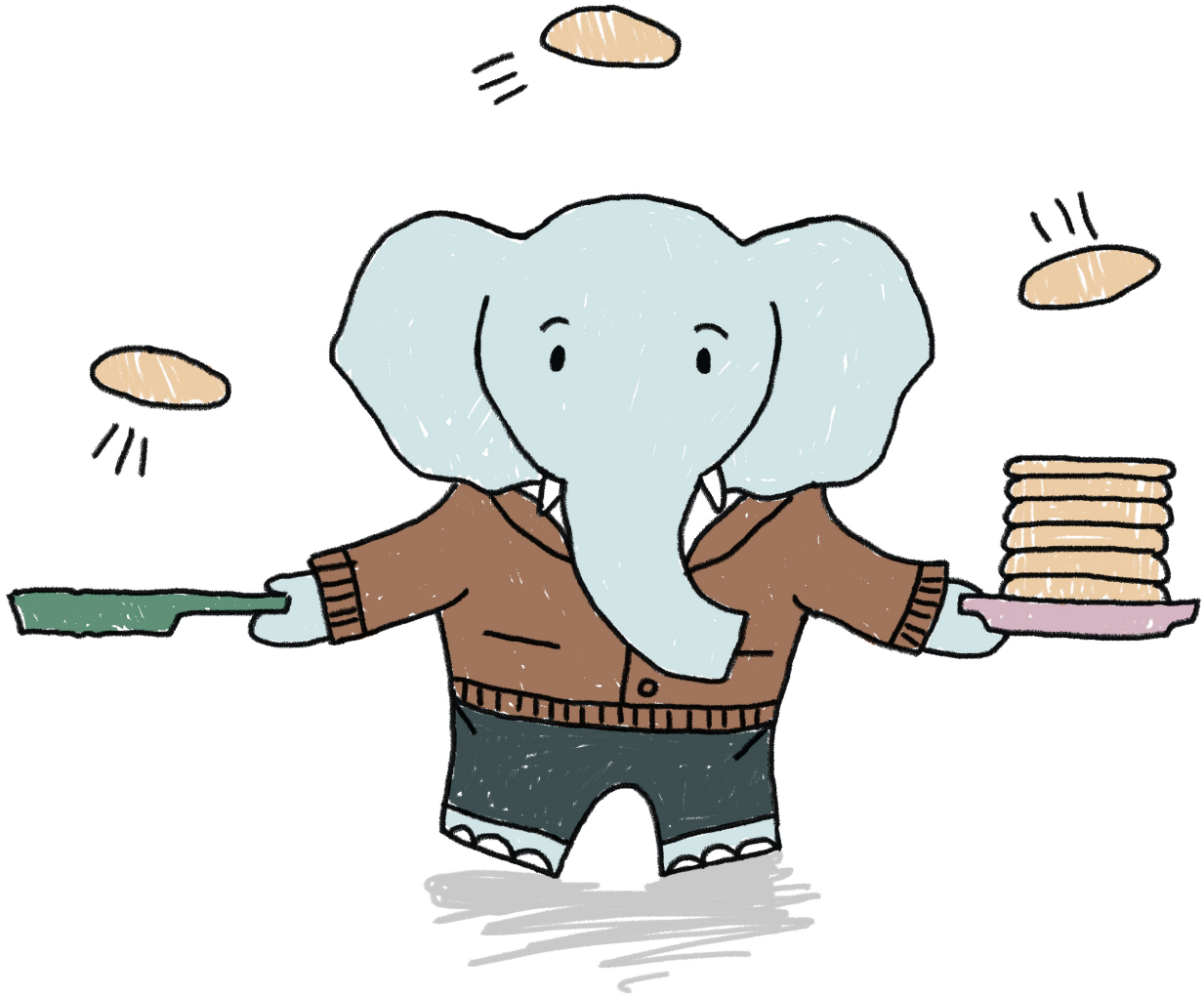




You did it! The rough outline for your elephant is complete.

Now, use a darker colour to draw overtop of the guide with as much detail as you would like. Once you have finished this, you can use an eraser to remove your initial pencil lines.





Don't forget to add colour!

You're done!